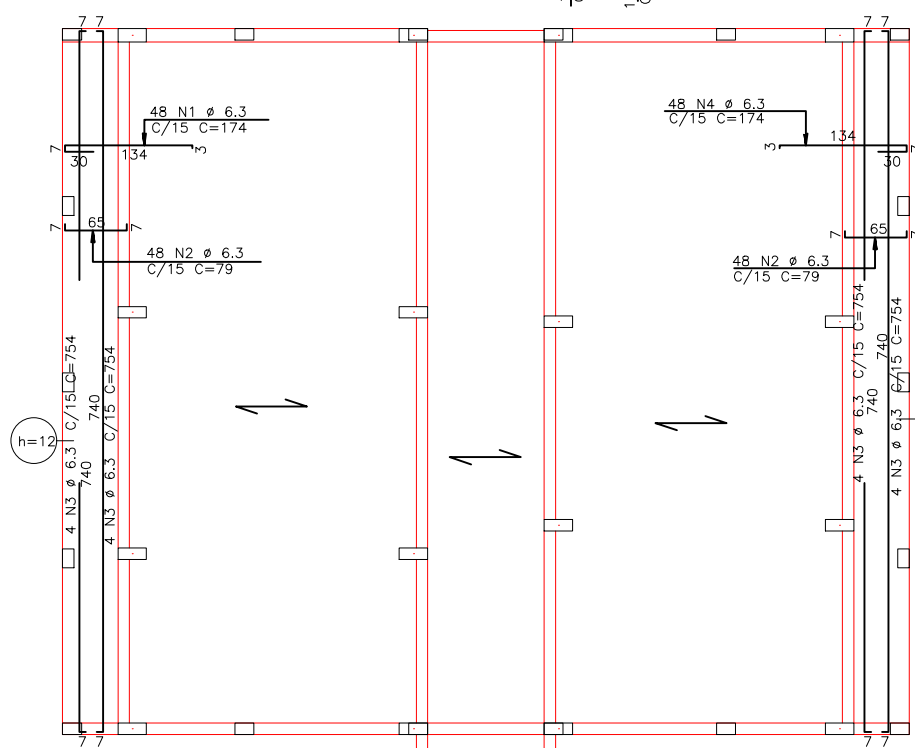
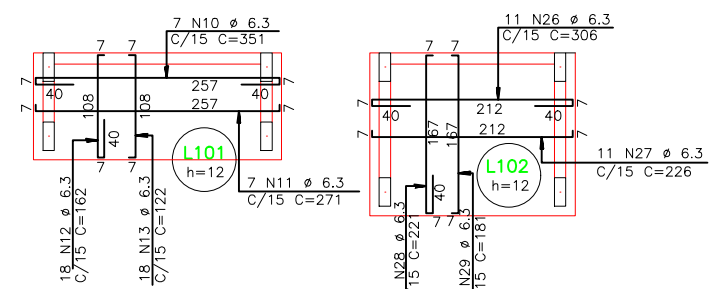


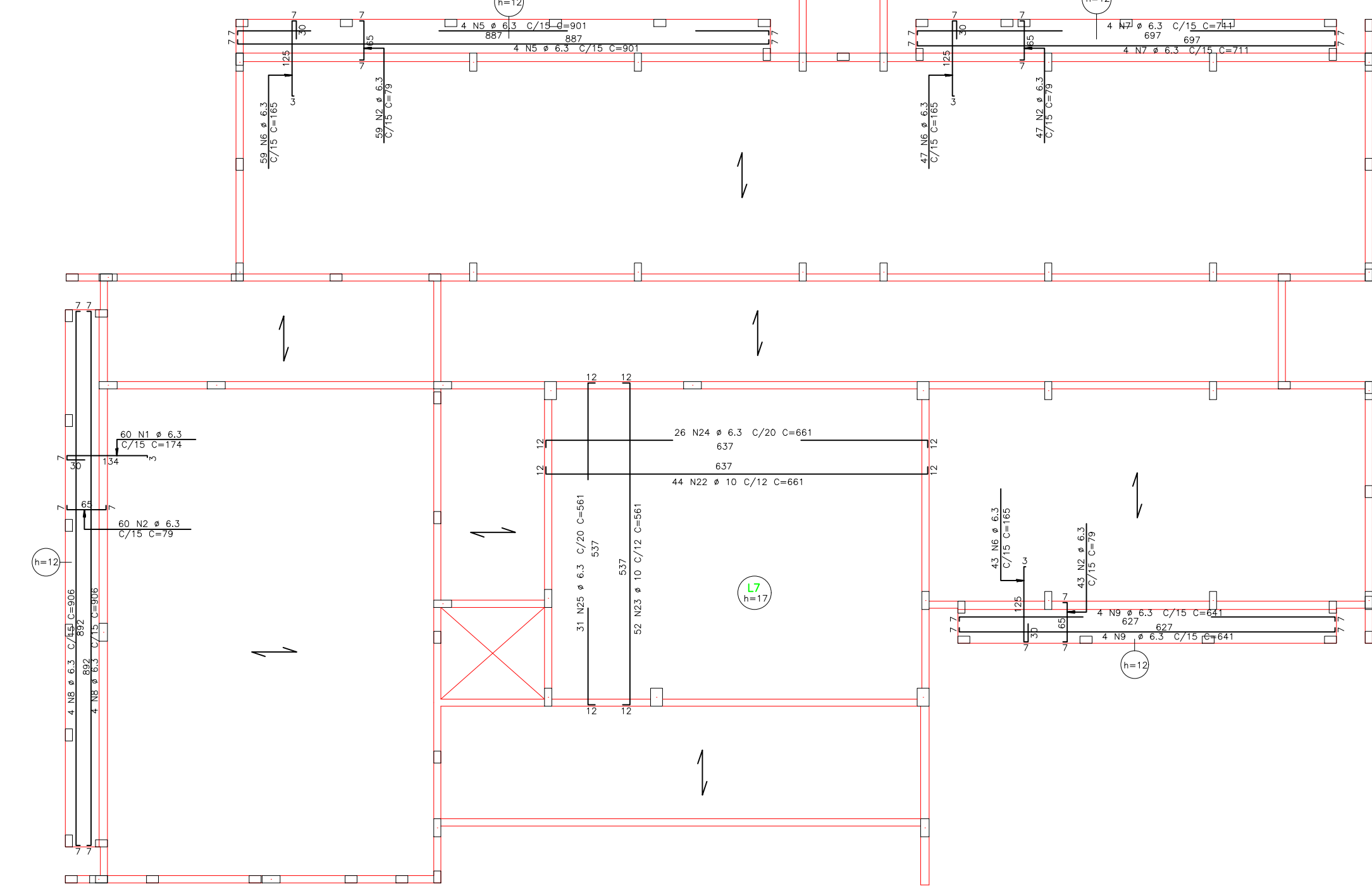
ACO	POS	BIT (mm)	QUANT	COMPR (cm)	UNIT (cm)
V101					
S5A	1	8	2	700	
S5A	2	8	2	675	
S5B	3	5	30	105	
S5B	4	5	2	637	
V102					
S5A	1	8	2	700	
S5A	2	8	2	680	
S5B	3	5	31	105	
S5B	4	5	2	637	
V103					
S5A	1	8	2	600	
S5A	2	8	2	575	
S5B	3	5	23	105	
S5B	4	5	2	537	
V104					
S5A	1	8	2	545	
S5A	2	8	2	515	
S5B	3	5	12	100	
S5B	4	5	10	110	
S5B	5	5	2	248	
V105					
S5A	1	8	2	435	
S5A	2	8	2	415	
S5B	3	5	17	105	
S5B	4	5	2	376	

# ARMADURAS DAS LAJES MACIÇAS DO TETO

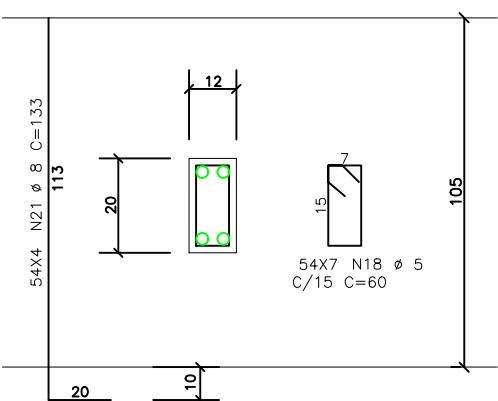


## LEGENDA

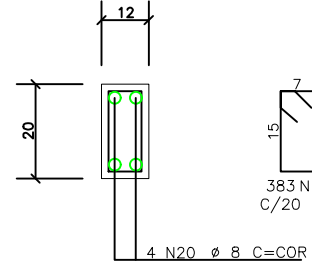
- ARMADURAS NA FACE SUPERIOR DA LAJE
- ARMADURAS NA FACE INFERIOR DA LAJE



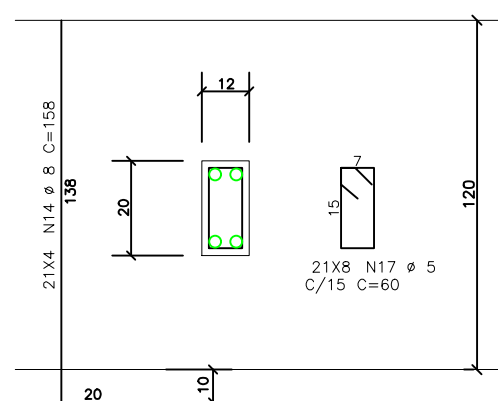
PL1 12/20 (54x)



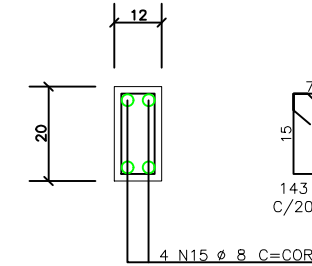
CINTA C1 12/20



PL2 12/20 (21x)



CINTA C2 12/20



CONCRETO		CARGAS PARA DIMENSIONAMENTO	
Fck=	25 MPa	A/C Mdx=	0,60
Ec=	28 GPa	CARGA UTILIZAÇÃO	Kg/m2
MATERIAL :		REVESTIMENTO PISO	Kg/m2
REVESTIMENTO :			
MATERIAL DE ENCHIMENTO :			
REVESTIMENTO :			

GOVERNO DO ESTADO DO PARANÁ  
SEI - SECRETARIA DE INFRAESTRUTURA E LOGÍSTICA  
PARANÁ, 15 DE ABRIL DE 2014

PROJETO: ESTRUTURAL  
RESPONSÁVEL TÉCNICO/REGISTRO PROF.: ARM. LUIZ MÁRCIO DO TETO

EST 1111